



Turning Point Analytics utilizes a time-tested, real-world strategy that optimizes the client's entry and exit points and adds alpha. TPA defines each stock as Trend or Range to identify actionable inflection points.

"In the short run, the market is a voting machine, but in the long run, it is a weighing machine." - Benjamin Graham

S&P 1500+ DAILY SNAPSHOT – COMMENTS & CHARTS Wednesday, March 27, 2024

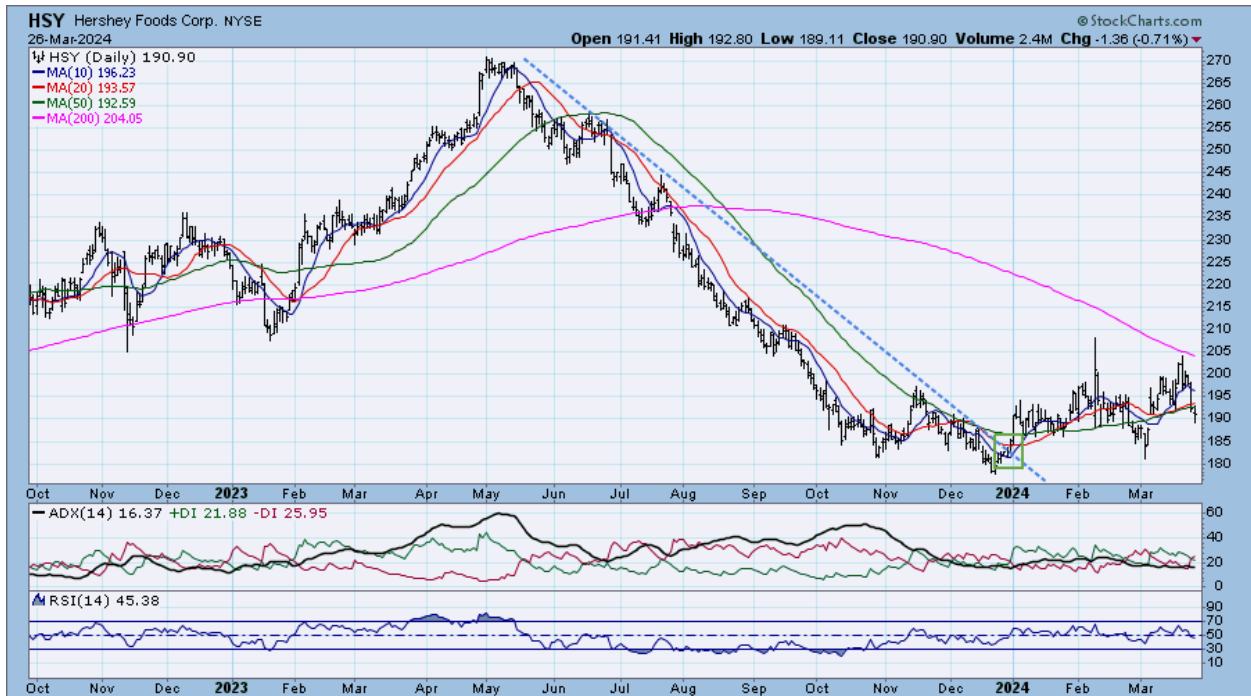
**Today's TPA Trend-Range Report is included below. TPA Trend-Range Strategy is explained below. Links for Explanations of Technical terms are at the bottom of the report**

**BUY**

- HSY rose above its 8-month downtrend line in early January. HSY has declined rapidly, down 33% in those 8 months, but the trend has definitely changed. HSY has established a pattern of higher lows and higher highs = uptrend (zoom chart). The 20-year weekly chart reveals that HSY is responding to a very long-term pattern of support at the 200-week moving average. This moving average was support in 2010, 2016, 2018, 2020 and currently.

RRG analysis shows that HSY has moved from the Lagging quadrant into the Improving quadrant as it has gained relative strength and relative momentum. HSY should continue this pattern into the Leading quadrant (RRG below).

**HSY Hershey Company 190.9000 Stop = 179.4460 Target = 238.6250 Target=25.00%**



**HSY - zoom**



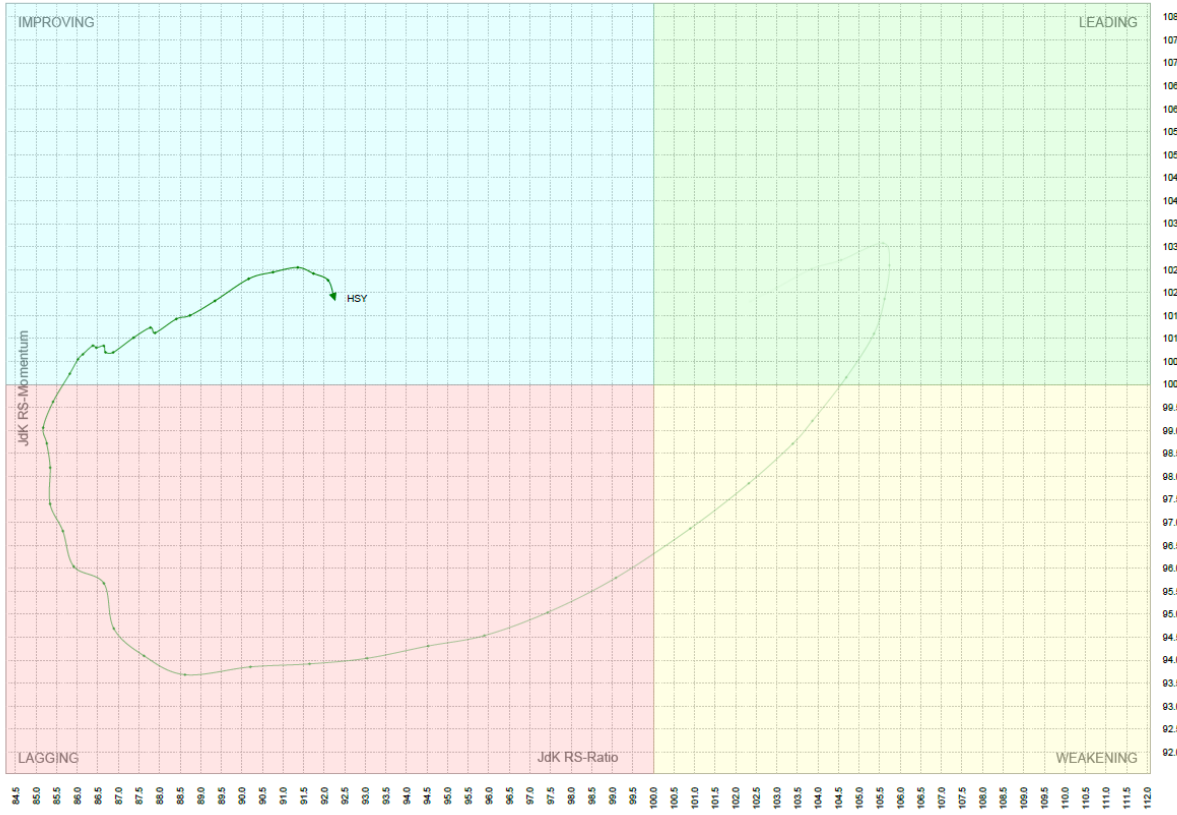
**HSY – long-term weekly**



[Relative Rotation Graphs \(RRG\) – explanation video](#)

[RRG – written explanation](#)

Weekly Relative Rotation Graph® Date: 3/29/2024 Benchmark: S&P 500 INDEX - SPX (WI)



TPA TREND-RANGE STRATEGY (see explanation below)

TPA TREND-RANGE REPORT (New and improved!)

SYMBOL	DESCRIPTION	INDUSTRY	SECTOR	(\$million)		CONDITION	SHORT TERM	POSSIBLE	OVERBOUGHT	RANGE2
				MKT CAP	LAST					
BHF	Brighthouse Financial Inc	Life Or Health Insurance	Finance	3,112	49.49	DOWNTREND	TURN UP??	-0.79%	0	
CCK	Crown Holdings Inc.	Containers Or Packaging	ProcessIndustries	9,352	77.43	DOWNTREND	TURN UP??	3.70%	0	
GXO	GXO Logistics Inc	Air Freight Or Couriers	Transportation	6,079	50.97	DOWNTREND	TURN UP??	4.39%	-1	
FL	Foot Locker Inc	Apparel Or Footwear Retail	RetailTrade	2,530	26.87	DOWNTREND	TURN UP??	6.30%	-2	
SAM	Boston Beer Co. Inc.	Beverages Alcoholic	ConsumerNonDurables	3,709	308.42	DOWNTREND	TURN UP??	8.20%	0	
TDC	Teradata Corp	Packaged Software	TechnologyServices	3,770	38.71	DOWNTREND	TURN UP??	8.40%	0	
FIWV	Five9 Inc	Packaged Software	TechnologyServices	4,618	62.98	DOWNTREND	TURN UP??	9.02%	-1	
CLVT	ClariVate Plc	Miscellaneous Commercial Servico	CommercialServices	4,891	7.34	DOWNTREND	TURN UP??	12.85%	-3	
DV	DoubleVerify Holdings Inc	Packaged Software	TechnologyServices	5,674	33.13	DOWNTREND	TURN UP??	13.55%	-1	
DBX	Dropbox Inc	Data Processing Services	TechnologyServices	8,410	24.45	DOWNTREND	TURN UP??	14.11%	-2	
ROKU	Roku Inc	Electronics Or Appliances	ConsumerDurables	9,280	64.65	DOWNTREND	TURN UP??	18.08%	-1	
SABR	Sabre Corp	Packaged Software	TechnologyServices	873	2.30	DOWNTREND	TURN UP??	39.87%	-3	
LZ	LegalZoom.com Inc.	Miscellaneous Commercial Servico	CommercialServices	2,445	13.01	UPTREND	TURN DOWN??	-11.00%	1	
SLVM	Sylvamo Corp	Pulp And Paper	ProcessIndustries	2,498	60.62	UPTREND	TURN DOWN??	-10.83%	1	
OKTA	Okta Inc	Packaged Software	TechnologyServices	17,481	104.43	UPTREND	TURN DOWN??	-10.77%	3	
XPO	XPO Inc	Trucking	Transportation	14,267	122.87	UPTREND	TURN DOWN??	-10.08%	2	
BWXT	BWX Technologies Inc	Aerospace And Defense	ElectronicTechnology	9,155	100.26	UPTREND	TURN DOWN??	-9.15%	3	
ERIE	Erie Indemnity Co.	Property Or Casualty Insurance	Finance	18,906	405.96	UPTREND	TURN DOWN??	-8.29%	3	
META	Meta Platforms Inc.	Internet Software Or Services	TechnologyServices	1,264,227	495.89	UPTREND	TURN DOWN??	-7.20%	2	
WFC	Wells Fargo & Co.	Major Banks	Finance	202,769	56.68	UPTREND	TURN DOWN??	-7.17%	0	
VVV	Valvoline Inc	Other Consumer Services	ConsumerServices	5,637	43.48	UPTREND	TURN DOWN??	-6.98%	0	
IRM	Iron Mountain Inc.	Real Estate Investment Trusts	Finance	22,783	77.95	UPTREND	TURN DOWN??	-6.45%	1	
QCOM	Qualcomm Inc.	Semiconductors	ElectronicTechnology	186,450	167.07	UPTREND	TURN DOWN??	-6.21%	1	
TRU	TransUnion	Financial Publishing Or Services	CommercialServices	15,256	78.64	UPTREND	TURN DOWN??	-5.57%	1	
MPW	Medical Properties Trust Inc	Real Estate Investment Trusts	Finance	2,384	3.98	UPTREND	TURN DOWN??	-5.51%	-2	
LECO	Lincoln Electric Holdings Inc.	Industrial Machinery	ProducerManufacturing	14,377	253.01	UPTREND	TURN DOWN??	-5.27%	1	
BFAM	Bright Horizons Family Solutions Inc.	Miscellaneous Commercial Servico	CommercialServices	6,550	113.00	UPTREND	TURN DOWN??	-5.25%	2	
IQV	IQVIA Holdings Inc	Servicestothe Health Industry	HealthServices	45,092	247.74	UPTREND	TURN DOWN??	-5.20%	1	
DG	Dollar General Corp.	Discount Stores	RetailTrade	33,069	150.66	UPTREND	TURN DOWN??	-5.16%	1	
ASH	Ashland Inc	Food Specialty Or Candy	ConsumerNonDurables	4,772	95.26	UPTREND	TURN DOWN??	-4.75%	1	
MORNI	Morningstar Inc	Investment Managers	Finance	12,979	303.75	UPTREND	TURN DOWN??	-4.72%	1	
AGO	Assured Guaranty Ltd	Specialty Insurance	Finance	4,980	89.79	UPTREND	TURN DOWN??	-4.54%	2	
VTS	Vitesse Energy Inc	Oil And Gas Production	EnergyMinerals	754	22.98	UPTREND	TURN DOWN??	-4.44%	-1	
CHE	Chemed Corp	Hospital Or Nursing Managemen	HealthServices	9,645	638.00	UPTREND	TURN DOWN??	-4.14%	1	
DOCN	DigitalOcean Holdings Inc	Packaged Software	TechnologyServices	3,529	38.87	UPTREND	TURN DOWN??	-4.06%	0	
HII	Huntington Ingalls Industries Inc	Aerospace And Defense	ElectronicTechnology	11,476	289.87	UPTREND	TURN DOWN??	-4.01%	1	
EVR	Evercore Inc	Investment Banks Or Brokers	Finance	7,359	190.25	UPTREND	TURN DOWN??	-3.96%	1	
SYF	Synchrony Financial	Finance Or Rental Or Leasing	Finance	16,917	41.58	UPTREND	TURN DOWN??	-3.80%	0	
RTEA	Qurate Retail Inc - Ordinary Shares - Series A	Broadcasting	ConsumerServices	439	1.12	UPTREND	TURN DOWN??	-3.79%	-1	
TPR	Tapestry Inc	Apparel Or Footwear Retail	RetailTrade	10,416	45.41	UPTREND	TURN DOWN??	-3.73%	1	
FTV	Fortive Corp	ectronic Equipment Or Instrumen	ElectronicTechnology	29,829	84.89	UPTREND	TURN DOWN??	-3.57%	2	
MNST	Monster Beverage Corp.	Beverages Non Alcoholic	ConsumerNonDurables	61,731	59.32	UPTREND	TURN DOWN??	-3.48%	0	
NEU	NewMarket Corp.	Chemicals Specialty	ProcessIndustries	5,996	625.30	UPTREND	TURN DOWN??	-3.29%	1	
SCI	Service Corp. International	Other Consumer Services	ConsumerServices	10,697	73.25	UPTREND	TURN DOWN??	-3.24%	1	

SYMBOL	DESCRIPTION	INDUSTRY	SECTOR	(\$million)		CONDITION	SHORT TERM	POSSIBLE	OVERBOUGHT	RANG
				MKT CAP	LAST					
CF	CF Industries Holdings Inc	Chemicals Agricultural	ProcessIndustries	15,358	81.81	UPTREND	TURN DOWN??	-2.70%	1	
CRI	Carters Inc	Apparel Or Footwear Retail	RetailTrade	2,995	82.09	UPTREND	TURN DOWN??	-2.46%	1	
CHD	Church & Dwight Co. Inc.	Household Or Personal Care	ConsumerNonDurables	25,070	102.84	UPTREND	TURN DOWN??	-2.16%	1	
BAX	Baxter International Inc.	Medical Specialties	HealthTechnology	21,102	41.54	UPTREND	TURN DOWN??	-1.94%	0	
LPLA	LPL Financial Holdings Inc	Investment Banks Or Brokers	Finance	19,374	260.22	UPTREND	TURN DOWN??	-1.86%	1	
PFGC	Performance Food Group Company	Other Transportation	Transportation	11,706	75.24	UPTREND	TURN DOWN??	-1.45%	1	
SRC	Spirit Realty Capital Inc (Delisted)	Real Estate Investment Trusts	Finance	5,989	42.31	UPTREND	TURN DOWN??	0.20%	1	
IPG	Interpublic Group Of Cos. Inc.	Advertising Or Marketing Service	CommercialServices	12,142	32.06	UPTREND	TURN DOWN??	0.90%	0	
EXAS	Exact Sciences Corp.	Medical Specialties	HealthTechnology	11,843	65.24	RANGE	TOP	-15.09%	1	
CAR	Avis Budget Group Inc	Finance Or Rental Or Leasing	Finance	4,205	118.53	RANGE	TOP	-13.17%	1	!!
MGM	MGM Resorts International	Casinos Or Gaming	ConsumerServices	14,729	46.46	RANGE	TOP	-11.82%	0	!!
MASI	Masimo Corp	Medical Specialties	HealthTechnology	7,442	140.65	RANGE	TOP	-11.36%	2	
SNX	TD Synnex Corp	Electronics Distributors	DistributionServices	10,007	112.27	RANGE	TOP	-10.35%	1	
ALK	Alaska Air Group Inc.	Airlines	Transportation	5,026	39.87	RANGE	TOP	-9.71%	0	
BWA	BorgWarner Inc	ks Or Construction Or Farm Mach	ProducerManufacturing	7,732	33.65	RANGE	TOP	-9.43%	1	
NTRS	Northern Trust Corp.	Investment Managers	Finance	17,672	86.62	RANGE	TOP	-8.78%	1	
BKNG	Booking Holdings Inc	Other Consumer Services	ConsumerServices	125,103	3661.08	RANGE	TOP	-8.09%	1	
PCOR	Procore Technologies Inc	Packaged Software	TechnologyServices	11,935	82.36	RANGE	TOP	-7.93%	3	
FOX	Fox Corporation	Broadcasting	ConsumerServices	13,273	27.95	RANGE	TOP	-7.39%	-1	
ANSS	Ansys Inc. - Registered Shares	Packaged Software	TechnologyServices	30,442	349.84	RANGE	TOP	-7.35%	1	
FOXA	Fox Corporation	Broadcasting	ConsumerServices	14,522	30.58	RANGE	TOP	-7.21%	-1	!!
STT	State Street Corp.	Investment Banks Or Brokers	Finance	23,002	76.18	RANGE	TOP	-7.11%	1	
BYD	Boyd Gaming Corp.	Casinos Or Gaming	ConsumerServices	6,306	65.65	RANGE	TOP	-6.68%	0	
BPOP	Popular Inc.	Regional Banks	Finance	6,262	86.66	RANGE	TOP	-6.61%	1	
PII	Polaris Inc	Recreational Products	ConsumerDurables	5,380	95.39	RANGE	TOP	-6.16%	1	
WTFC	Wintrust Financial Corp.	Regional Banks	Finance	6,204	100.92	RANGE	TOP	-5.93%	1	
IVZ	Invesco Ltd	Investment Managers	Finance	7,210	16.05	RANGE	TOP	-5.42%	-1	!!
LW	Lamb Weston Holdings Inc	Food Specialty Or Candy	ConsumerNonDurables	15,246	105.60	RANGE	TOP	-5.21%	1	
AVT	Amet Inc.	Electronics Distributors	DistributionServices	4,374	48.40	RANGE	TOP	-5.13%	0	
SSHC	SS&C Technologies Holdings Inc	Information Technology Services	TechnologyServices	15,937	64.49	RANGE	TOP	-4.57%	0	
ORI	Old Republic International Corp.	Specialty Insurance	Finance	8,337	29.97	RANGE	TOP	-4.38%	-1	
TW	Tradeweb Markets Inc	Investment Banks Or Brokers	Finance	22,801	107.21	RANGE	TOP	-4.36%	2	
VZ	Verizon Communications Inc	Wireless Telecommunications	Communications	171,744	40.85	RANGE	TOP	-3.67%	0	
PRI	Primerica Inc	Life Or Health Insurance	Finance	8,797	252.45	RANGE	TOP	-3.39%	2	!!
WELL	Welltower Inc.	Real Estate Investment Trusts	Finance	51,774	91.01	RANGE	BOTTOM	2.98%	1	
DHR	Danaher Corp.	Medical Specialties	HealthTechnology	183,786	248.46	RANGE	BOTTOM	3.75%	1	!!
SRE	Sempra	Electric Utilities	Utilities	43,770	69.24	RANGE	BOTTOM	3.82%	1	
HST	Host Hotels & Resorts Inc	Real Estate Investment Trusts	Finance	14,262	20.27	RANGE	BOTTOM	4.49%	-1	!!
XRAY	DENTSPLY SIRONA Inc	Medical Specialties	HealthTechnology	6,739	32.50	RANGE	BOTTOM	4.82%	0	
DOX	Amdocs Ltd	Information Technology Services	TechnologyServices	10,469	89.86	RANGE	BOTTOM	4.88%	1	
CNP	Centerpoint Energy Inc.	Electric Utilities	Utilities	17,198	27.23	RANGE	BOTTOM	5.03%	-1	
APTIV	Aptiv PLC	Auto Parts OEM	ProducerManufacturing	20,885	76.59	RANGE	BOTTOM	5.22%	1	
QGEN	Qiagen NV	Medical Specialties	HealthTechnology	9,452	42.70	RANGE	BOTTOM	5.66%	0	
DTE	DTE Energy Co.	Electric Utilities	Utilities	22,168	107.13	RANGE	BOTTOM	5.74%	1	

SYMBOL	DESCRIPTION	INDUSTRY	SECTOR	(\$million)		CONDITION TREND/RANGE	SHORT TERM ALERT	POSSIBLE NEXT MOVE	OVERBOUGHT OVERSOLD	RANGE? ALERT
				MKT CAP	LAST					
RHI	Robert Half Inc	Personnel Services	CommercialServices	8,146	77.43	RANGE	BOTTOM	5.96%	1	
HSIC	Henry Schein Inc.	Medical Distributors	DistributionServices	9,366	72.88	RANGE	BOTTOM	5.98%	1	
TMO	Thermo Fisher Scientific Inc.	Medical Specialties	HealthTechnology	216,898	568.82	RANGE	BOTTOM	6.02%	1	
JKHY	Jack Henry & Associates Inc.	Packaged Software	TechnologyServices	12,125	166.39	RANGE	BOTTOM	6.05%	1	
MOS	Mosaic Company	Chemicals Agricultural	ProcessIndustries	9,812	30.50	RANGE	BOTTOM	6.65%	-1	!!
UNP	Union Pacific Corp.	Railroads	Transportation	146,768	240.69	RANGE	BOTTOM	6.70%	1	!!
DOCS	Doximity Inc - Ordinary Shares - Class A	Packaged Software	TechnologyServices	5,035	26.99	RANGE	BOTTOM	6.91%	-1	
ELS	Equity Lifestyle Properties Inc.	Real Estate Investment Trusts	Finance	11,827	63.42	RANGE	BOTTOM	7.23%	0	
STE	STERIS PLC	Medical Specialties	HealthTechnology	21,889	221.52	RANGE	BOTTOM	7.48%	1	
INCY	Incyte Corp.	Pharmaceuticals Major	HealthTechnology	12,697	56.55	RANGE	BOTTOM	7.53%	0	
ES	Eversource Energy	Electric Utilities	Utilities	19,684	56.29	RANGE	BOTTOM	7.74%	0	
UGI	UGI Corp.	Wholesale Distributors	DistributionServices	4,973	23.73	RANGE	BOTTOM	8.24%	-1	
SUI	Sun Communities Inc.	Real Estate Investment Trusts	Finance	15,574	125.18	RANGE	BOTTOM	8.67%	1	!!
BXP	Boston Properties Inc.	Real Estate Investment Trusts	Finance	9,589	61.07	RANGE	BOTTOM	8.68%	0	!!
GFS	GlobalFoundries Inc	Semiconductors	ElectronicTechnology	28,097	50.79	RANGE	BOTTOM	8.91%	-1	
RGEN	Repligen Corp.	Pharmaceuticals Major	HealthTechnology	10,253	183.84	RANGE	BOTTOM	10.05%	1	
ZI	ZoomInfo Technologies Inc	Packaged Software	TechnologyServices	5,855	15.42	RANGE	BOTTOM	10.74%	-3	
JBGS	JBG Smith Properties	Real Estate Investment Trusts	Finance	1,453	15.81	RANGE	BOTTOM	12.22%	-1	
EL	Estee Lauder Cos. Inc.	Household Or Personal Care	ConsumerNonDurables	49,939	139.31	RANGE	BOTTOM	12.53%	1	
HPP	Hudson Pacific Properties Inc	Real Estate Investment Trusts	Finance	862	6.11	RANGE	BOTTOM	12.84%	-2	!!
NKE	Nike Inc.	Apparel Or Footwear	ConsumerNonDurables	140,270	92.58	RANGE	BOTTOM	13.83%	0	
LESL	Leslies Inc	Specialty Stores	RetailTrade	1,190	6.45	RANGE	BOTTOM	28.15%	-2	
LULU	Lululemon Athletica inc.	Internet Retail	RetailTrade	48,657	386.14	RANGE	BOTTOM	30.70%	-1	!!
ADPT	Adaptive Biotechnologies Corp	Biotechnology	HealthTechnology	418	2.88	RANGE	BOTTOM	47.17%	-3	!!
CVNA	Carvana Co.	Specialty Stores	RetailTrade	10,559	90.81	UPTREND				

## TPA TREND-RANGE STRATEGY EXPLAINED

### Alerts:

#### 1. Uptrend stocks trading below short term moving averages:

- Possible buy at uptrend support (chart 1)
- Possible sell if medium-term trend break (chart 2)

#### 2. Downtrend stocks trading above short-term moving averages

- Possible sell at downtrend resistance (chart 3)
- Possible buy if medium-term trend break (chart 4)

#### 3. Range stocks (low trend strength) at the top or bottom 10% of their 2 STD DEV Bollinger Band

- Possible buy at bottom of range (chart 5)
- Possible sell at top of range (chart 6)

### Medium-term Trend Strength determined by DMI ADX

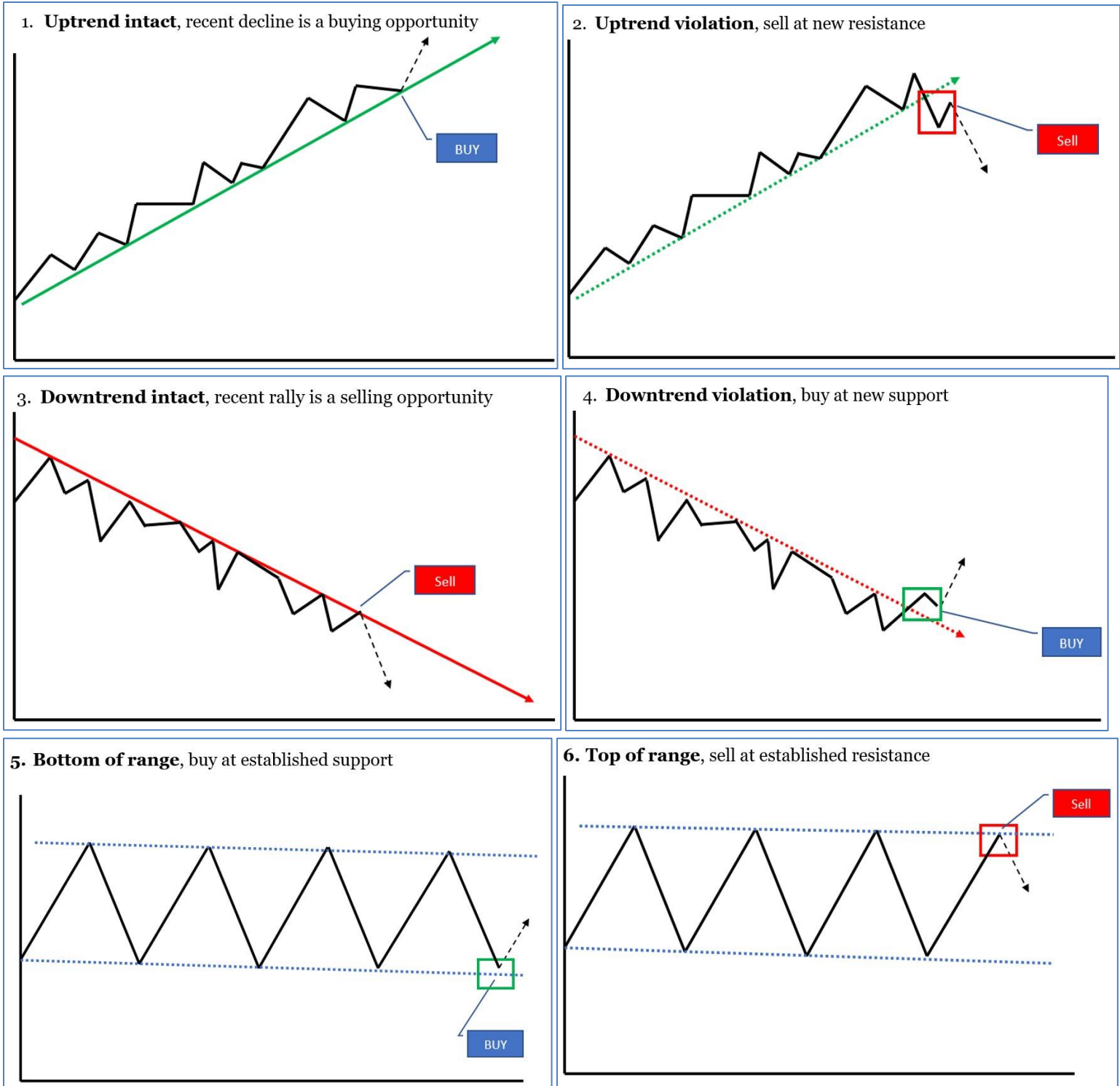
*Uptrend – trend strength & DMI+ > DMI-*

*Downtrend – trend strength & DMI- > DMI+*

*Range – low trend strength*

*Actionable stocks fit one of the 6 TPA charts at the bottom of this report*

TPA looks first to Trend-Range for actionable ideas. Other variables must also be examined including, but not confined to, TPA's ongoing macro investment themes, relative strength compared to the market, sector, and subsector, overbought or oversold characteristics, other technical patterns that may exist, patterns that involve fundamentals or EPS surprise, longer-term support and resistance levels, and longer-term uptrends and downtrend lines.



CLICK ON LINKS BELOW FOR TECHNICAL INDICATOR EXPLANATIONS:

[ASCENDING - DESCENDING TRIANGLE](#)



**BASING-TOPPING-CONSOLIDATION**  
**BREAKOUT (Breakdown)**  
**CHANNEL & RANGE**  
**DIRECTIONAL MOVEMENT INDEX (DMI)**  
**DOUBLE BOTTOM or DOUBLE TOP**  
**MACD-MOVING AVERAGE CONVERGENCE-DIVERGENCE**  
**MOVING AVERAGES**  
**RELATIVE STRENGTH & PEER STOCK PERFORMANCE**  
**REPEATING PATTERNS**  
**RSI-RELATIVE\_STRENGTH**  
**SUPPORT, RESISTANCE, BREAKOUT, BREAKDOWN**  
**TREND**

Visit TPA at <http://www.turningpointanalyticsllc.com/>

**ALWAYS REMEMBER: No strategy exists in a vacuum – always evaluate the relevant sector & market.**  
*Over 80% of portfolio performance is determined by sector and market forces (Ibbotson & Kaplan study – January/February 2000)*

**Turning Point Analytics Disclaimer**

*Turning Point Analytics (TPA) is only one of many tools that an investor should use to make a final investment decision. TPA is an overlay on top of a client's good fundamental or macro analysis. TPA does not create or provide fundamental analysis. The information in this communication may include technical analysis. Technical analysis is a discipline that studies the past trading history of a security while trying to forecast future price action. Technical analysis does not consider the underlying fundamentals of the security in question and it does not provide information reasonably sufficient upon which to base an investment decision. Investors should not rely on technical analysis alone while making an investment decision. Before making an investment decision, investors should consider reviewing all publicly available information regarding the security in question, including, but not limited to, the underlying fundamentals of the security and other information which is available in filings with the Securities and Exchange Commission. The information and analysis contained in reports provided by TPA are copyrighted and may not be duplicated or redistributed for any reason without the express written consent of TPA. The information in this communication is for institutional or sophisticated investors only. By accepting this communication, the recipient agrees not to forward, and/or copy the information to any other person, except as permitted, or required by law. TPA does not guarantee accuracy or completeness. TPA is a publisher of technical research and has no investment banking or advisory relationship with any company mentioned in any report. Reports are neither a solicitation to buy nor an offer to sell securities. Past performance is in no way indicative of future results. Opinions expressed are subject to change without notice. TPA will provide, upon request, the details of any past recommendations. TPA's analysis and recommendations should not be used as the sole reason to buy or sell any security. TPA may compensate brokers and intermediaries for sales and marketing services. You*

*understand and acknowledge that there is a very high degree of risk involved in trading securities and/or currencies. The Company, the authors, the publisher, and all affiliates of Company assume no responsibility or liability for your trading and investment results. It should not be assumed that the methods, techniques, or indicators presented will be profitable or that they will not result in losses. Statements, data, and analysis made by TPA or in its publications, are made as of the date stated and are subject to change without notice. TPA and/or its officers and employees may, from time to time acquire, hold, or sell a position in the securities mentioned herein. Upon request, TPA will furnish specific information in this regard. TPA will not be held liable for losses caused by conditions and/or events that are beyond TPA's control including, but not limited to war, strikes, natural disasters, new government restrictions, market fluctuations, and communications disruptions.*